

Product data sheet

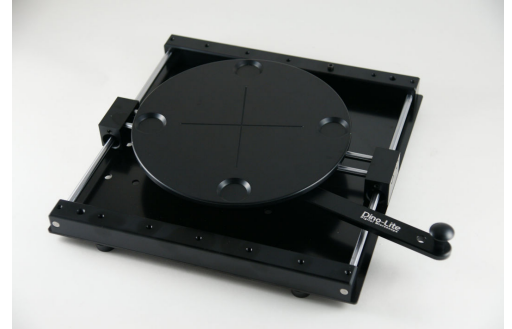
www.dinolite-uk.com

Dino-Lite MS25X Inspection X/Y table

The MS25X inspection table assists you to move and inspect objects under the microscope.

You can move the MS25X turntable in an X and Y axis with up to 24cm of diagonal movement and also have the ability to rotate the object 360 degrees.

The MS25X allows many ways to move things around. Use your fingers on the plate to rotate and move objects in an X - Y movement or use the arm for simple X - Y movement only for objects that are larger than the plate (18cm diameter). The MS25X is a helpful accessory for examining things under the Dino-Lite microscopes.



Technical data

Model	MS25X
Unit dimensions (WxLxH)	25 x 24 x 5 cm
Unit weight	appr. 2,3 kg
Movement	24 cm diagonal movement
	360° rotation
	18 cm table diameter

